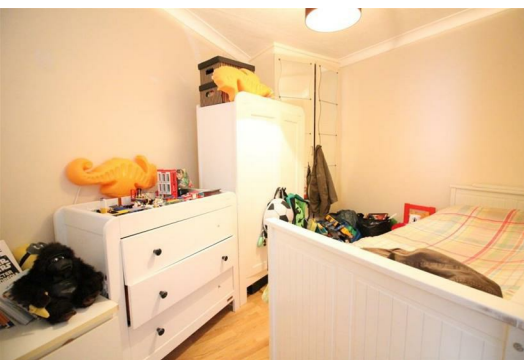




Gloucester Avenue

Slough, SL1 3AY

£2,500 Per month



Spacious, modern, three bedroom house to rent within close proximity to Farnham Road, local buses, shops and amenities. Free parking, double glazing, furnished, lots of storage, ready now.

Area Map



Floor Plans



We are delighted to be able to offer for rent this larger than average, three bedroom semi detached house.

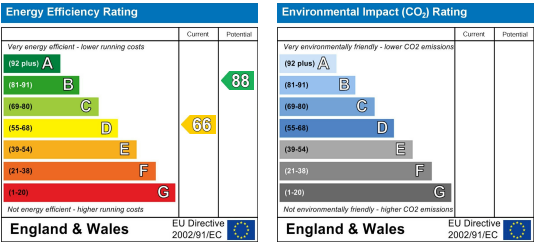
Situated on a residential street, close to local buses, parks, great schools, shops and amenities.

This would make an amazing new long term home for a small family.

- Features include;
- A huge separate reception and dining room
 - A large separate fitted kitchen
 - Three good sized bedrooms, all able to accommodate double beds
 - A separate bathroom suite with a bath tub, shower, WC and sink
 - Wooden flooring and neutral decor throughout
 - Free parking
 - Long term let
 - Ready to view now
 - Suitable for a small family

Call our office today to organise an appointment to view.

Energy Efficiency Graph



These particulars, whilst believed to be accurate are set out as a general outline only for guidance and do not constitute any part of an offer or contract. Intending purchasers should not rely on them as statements of representation of fact, but must satisfy themselves by inspection or otherwise as to their accuracy. No person in this firms employment has the authority to make or give any representation or warranty in respect of the property.